



## MANDAN INDEPENDENCE DAY PARADE RULES AND REGULATIONS

**Mandan Independence Day Parade will be held on Thursday July 4th, 2025.**

- The Parade departs from West Memorial Highway at 10 a.m. and will arrive at Mandan Avenue and Main Street at approximately 10:30 a.m.
- All entries will be assigned a staging area at DCP to assemble, in Parade order, prior to the Parade's start.
- Entrants are required to be in their assigned staging area, assembled and ready to move-out by 9:45 a.m.
- Entrants not in their assigned staging area by the prescribed time will forfeit their spot and placed first-come, first-served at the end of the parade.

### **Parade Entry Details**

- **NO LATE ENTRIES WILL BE ALLOWED!** A completed parade entry and signed release form, along with applicable fees must be received by: Friday, June 13th, 2025 at 4:30pm.
- Entry fees are non-refundable. Refunds will not be given for no-shows, cancellations, extractions, bad weather, etc.
- There is a limit of two vehicles per entry.
- **ALL PARTICIPANTS MUST HAVE SUBMITTED WAIVER AND RELEASE FORM ONLINE BEFORE SATURDAY JUNE 28th, 2025.** Once submitted participants will receive Participant identification used to enter the parade staging area on the morning of the parade.
- Annual Parade Float Competition. Awards for the top 4 floats pick by judges.
  - The name of your entry/business/organization/float must be displayed on your unit. Each float/entry will be judged based on Parade Theme.

### **Parade Float Decorations**

- **ALL PARADE FLOATS MUST BE DECORATED!**
- The Parade Committee, Parade Chairman, and the Mandan PD at their sole discretion holds the right to remove any entry that is not decorated, that

contains vulgar or offensive décor, or that is not following with the theme of the parade.

- Encouraged unit decorations include, but are not limited to, American Flags, materials such as fringe, skirting, bunting and other decorative items.
- Units are also encouraged to incorporate patriotic theme items into the overall decorated concept.
- Absolutely NO pyrotechnics, fire or firing of firearms is allowed.
- Entries that use live animals are responsible for cleaning up after the animals immediately. Riding animals must always remain on the ground surface and are PROHIBITED from riding on a parade unit.
- Generators, converters, and batteries can be used to power decorations and sound equipment on the parade unit.
  - Make sure the power unit is big enough to provide power safely.

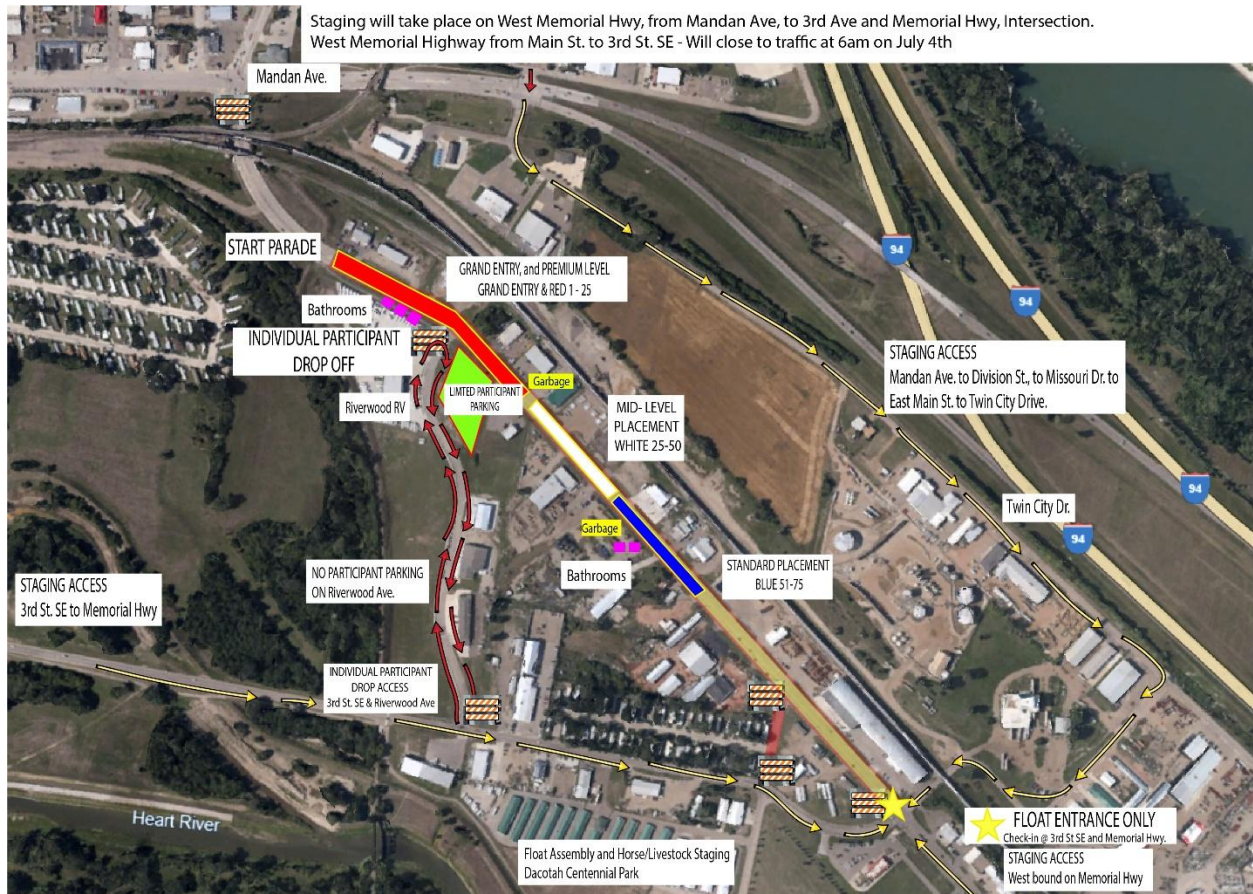
### **Float Requirements**

- Float entries may not exceed 13 feet in height (to ensure clearance for the streetlights), 12 feet in width and 55 feet in length NOT including tow units.
- The framework must be at least 12 inches from the ground when the float is decorated and loaded. (This will allow necessary ground clearance during the lineup and parade).
- Sufficient wheel and wagon tongue clearance must be incorporated so that no interference may occur with the chassis.
- All entries must be self-propelled, motor-pulled or horse drawn. This is a Forward Motion Parade. All units and entries must keep moving forward.
- The tow vehicle is strongly encouraged to be decorated as well. We strongly encourage that the trailers are skirted.
- All entries are not permitted to cause any gap, Entrants are expected to keep moving the entire duration of the Parade.
- Any activities that slow the progress of the Parade are discouraged, this includes shaking hands, visiting with spectators, or taking photos.
- The distribution of fliers or other bulk material is **PROHIBITED** (This causes unnecessary garbage in the streets)

### **Safety**

- **All children under the age of 13 participating in the parade must be always supervised by an adult.**
- **In the interest of safety, throwing candy and prizes from float/vehicle is PROHIBITED.**
- Each unit may have people walking beside the float HANDING out candy and prizes to the crowd.
- Consumption of Alcohol and/or use of Tobacco products is **PROHIBITED** as a Parade participant.
- **PARADE PARTICIPANTS ARE ONLY** allowed to ride on a float/unit once checked in at the Parade staging area, during the parade, or on the way back to the parade staging area. **NO RIDERS** on a float/unit being transported to or from the staging area. Riders are only allowed to ride during the normal parade facilitation.

- Outside of a flatbed tow unit, Parade participants are **PROHIBITED** from riding on, or sitting on any vehicle apparatus, equipment piece, or part of a vehicle that is not designed or intended for a participant to sit or ride on.
- **The Parade Committee, Parade Chairman, and the Mandan PD at their sole discretion hold the right to remove any entry from the parade not following the rules and regulations.**



**MANDAN**  
*Independence Day*  
PARADE   
EST. 1879